

System feature

Physical Dimensions



- minisono L3-12
- Height: 25.5 mm
- Width: 62.5 mm
- Depth: 150 mm
- Weight: 175 g



- minisono C1-6
- Height: 25.5 mm
- Width: 62.5 mm
- Depth: 157 mm
- Weight: 180 g

Clinical Applications

·Small Parts ·MSK ·Vascular ·Urology ·Abdomen ·EM ·Breast

Imaging Modes

·2D(B-mode) ·Color Doppler ·Pulsed Wave Doppler ·Power Doppler ·M-mode

Device Values



MINISONO

ALPINION MEDICAL SYSTEMS Co., Ltd.

77, Heungan-daero 81beon-gil, Dongan-gu, Anyang-si, Gyeonggi-do, Korea

Homepage www.alpinion.com

E-mail international@alpinion.com

TEL +82-2-3282-0900

FAX +82-2-851-5591

Standalone clinical images may have been cropped to better visualize pathology.

Copyright©2019 ALPINION MEDICAL SYSTEMS CO., LTD. All rights reserved.
 Catalogue contents may change without prior notice to customers due to performance enhancements.



MKT-MS-TS-PC-E2004-V1.0



MINISONO
 Anywhere Anytime Anybody

ALPINION
 MEDICAL SYSTEMS

ALPINION MEDICAL SYSTEMS
 We are Ultrasound Professionals

Anywhere Anytime Anybody

minisono

The minisono system is a new generation, tablet-based ultrasound diagnostic system that is smaller, simpler, and more compact than the existing bulky, complicated systems.

You can connect a minisono to a Microsoft Surface tablet and perform ultrasound scans using software supported by the Windows platform. minisono can be used conveniently in space- and time-constrained environments, such as a clinic, hospital ward, emergency room, or operating theater, while ensuring high-quality diagnostic examinations. In addition, medical practitioners can get up close and personal with patients during examinations, which helps them build trust. Accompanying you anytime, anywhere, minisono will introduce a new paradigm in ultrasound diagnosis.



Mobility unlimited potential

minisono is light, compact, and easy to move

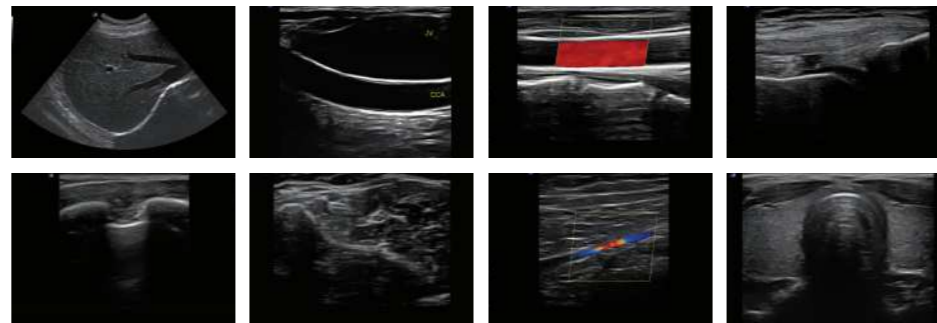
minisono is light, compact, and easy to move. Since it's both small and portable, you can use it conveniently even in tight spaces without having to change the position of the patient or other devices. You can scan a patient exactly when the need arises and make a diagnosis quickly, anytime, anywhere. This kind of experience can make patients feel more relaxed and increase their trust in the examination.



Quality imaging for handheld

minisono ensures quality image for valuable challenge

Ultrasound system company Alpinion has combined transducer and image-processing technologies to ensure that minisono provides sharper and clearer high-definition 2D images and Doppler information. Using two types of transducers, Convex and Linear, you can scan from the deepest to the most superficial part of the human body. The transducers have a wide range of applications, and can be used in a variety of clinical situations.



Focusing ease of use

Make it easy – All you need is a minisono and a Surface tablet

You can quickly and easily use minisono as soon as you connect the tablet with the transducer via USB. minisono's uniquely simple and intuitive user interface, combined with the tablet's familiar touch control, will help you to focus on scanning. minisono is easy to operate and provides the most essential features, so it is perfect for training medical practitioners in ultrasound scanning. Thanks to minisono, you can dramatically reduce the learning curve for people training in ultrasound scanning techniques.

