



ECUBE7
All-in-one Solution for Top Performers



Slim & Powerful

ECUBE7

The E-CUBE 7 delivers **compact and powerful image performance** for a fast and confident clinical decision, a **smart-software package** for multiple applications, and **design ergonomics** to maximize space efficiency and mobility.

Embedded with ALPINION's core imaging technology and imaging platform, the E-CUBE 7 provides clinicians excellent 2D, color flow, CW/PW Doppler performance. The high-quality transducers of the E-CUBE 7, designed and developed by ALPINION, enhance the imaging performance of the E-CUBE 7. The E-CUBE 7 is the only system in its class that provides high featured transducers like single crystal convex and phased array. The smart and intuitive application software and features of the E-CUBE 7 empower clinicians to make diagnostic decisions with confidence.



S l i m & P o w e r f u l

Powerful Image Performance

ALPINION's proprietary acoustic technologies generate refined signals that perfectly match impedance with the system.

The E-CUBE 7's advanced transducer portfolio is enhanced by acoustic technologies such as Crystal Signature™, ALPINION's unique single crystal technology. ALPINION's core imaging technologies process and refine signals under a flexible and reliable FleXcan™ Architecture imaging platform that guarantees uniform image quality.

Sophisticated post-processing imaging technology set, Optimal Imaging Suite™ provides high-quality image performance.

Transducer

ALPINION's acoustic technology combined transducer set

Crystal Signature™

ALPINION's unique single crystal technology

SensitiView™

ALPINION's integrated acoustic technology for high resolution images

MicroFit™

ALPINION's ergonomic design technology for excellent grip and lightweight transducers

System Hardware

FleXcan™ Architecture

ALPINION's innovative flexible software driven imaging platform for system stability and easy upgrades with minimum hardware changes

Connectivity

DICOM 3.0 standard, MPPS and Modality work list

Excellent storage capability

Optimal storage formats (USB, CD/DVD and network storage connections)

Software

Optimal Imaging Suite™

ALPINION's core imaging technology set (SCI, FTHI, FCI, SRI and FullSRI™)

Volume Master™

ALPINION's lucrative 3D/4D engine for routine OB/GYN exams

Live HQ™

Xpeed™

One touch auto optimization for 2D, Color and Doppler

Needle Vision™

Auto IMT

Stress Echo

Auto trace PW, CW

Anatomical M-mode

Tissue Doppler Imaging



Slim & Powerful

Optimized Solutions for Multiple Applications

The smart software and features empower clinicians to make diagnostic decision with confidence. The E-CUBE 7's excellent image quality and fast workflow enhance diagnostic efficiency and productivity through the applications. The E-CUBE 7 is the **All-in-One Solution** you need.



General Imaging



- High resolution abdominal images from a single crystal convex transducer
- Excellent Color/Doppler image performance
- Xspeed™, One touch optimization for 2D, Color and Doppler
- Auto trace PW, CW
- Auto IMT

Cardiology



- High-performance Stress Echo and TDI for cardiac exams
- Single crystal transducers with deep penetration and high sensitivity (SP1-5, SP3-8)
- Pencil transducers for cardiac and vascular exams (CW2.0, CW5.0)
- Excellent CW, PW Doppler performance
- Full measurement echo package and CV tool

Musculoskeletal



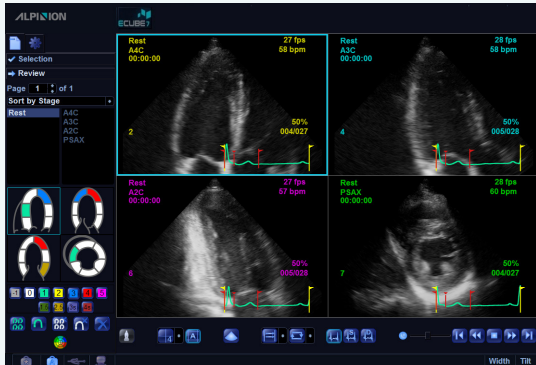
- High-performance linear transducer set (L3-8, L3-12, L3-12H^{WD}, L3-12H, L8-17)
- Excellent linear image performance for accurate FNA procedure and needle injection

OB/GYN

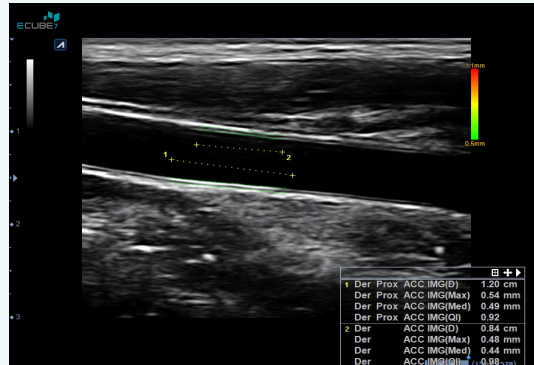


- Volume Master™, ALPINION's lucrative 3D/4D engine for routine OB/GYN exams
- Application-dedicated software and single crystal transducer (SC1-6)
- 60 mm wide linear transducer for breast exam (L3-12H^{WD})

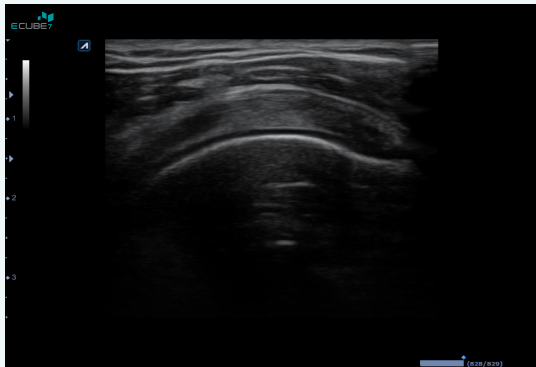
Image Gallery



Stress Echo



Carotid Auto IMT



Supraspinatus



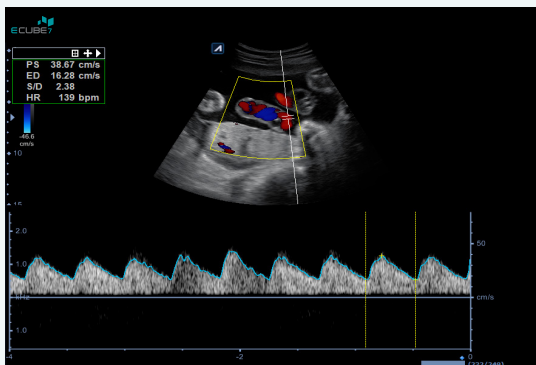
Needle Vision™



Pancreas



Gestational sac and Yolk sac



Umbilical Cord



Live HQ™

Slim & Powerful

Compact & Optimal Space Solutions

The E-CUBE 7's lightweight and slim design provides the best fit for small spaces and excellent mobility. The design ergonomics maximize space efficiency and mobility for routine daily practices.

Slim Design with Efficient Workflow

The E-CUBE 7 is designed for user convenience and efficient space utilization that provides excellent mobility and portability.

The E-CUBE 7 enables rapid diagnosis through highly efficient automatic features that simplify the workflow process.






- **Dimension :**
1,425(tall) / 1,355(short) X 509 X 670 mm (H x W x D)
- **Weight :** 57 kg






High Quality Transducers

ALPINION's uniform and fundamentally excellent image performance is the result of a unique and proprietary acoustic technology. The E-CUBE 7's high quality transducers provide clinicians with high definition image, excellent grip, easy contact and reliable performance.

Linear

				
<p><i>Linear array</i> Application : Anesthesiology, Nerve Block, Endocrine, MSK, Carotid</p>	<p><i>Wide linear array (60mm)</i> Application : Breast, Thyroid, MSK</p>	<p><i>High-density linear array</i> Application : Vascular, Breast, Thyroid, MSK, Peripheral Vascular</p>	<p><i>Linear array</i> Application : Vascular, Breast, Thyroid, MSK, Peripheral Vascular</p>	<p><i>Low frequency linear array</i> Application : Deep Vascular, Abdomen</p>



Convex

		
<p><i>Single crystal convex array</i> Application : Abdomen, OB/GYN, Fetal Echo</p>	<p><i>Convex array</i> Application : Abdomen, OB/GYN, Fetal Echo</p>	<p><i>Micro-convex array</i> Application : Pediatric Abdomen, Veterinary Medicine</p>



Volume Convex


<p><i>Volume convex array</i> Application : Abdomen, OB/GYN, Fetal Echo</p>

Phased Array

	
<p><i>Single crystal phased array</i> Application : Adult Cardiac, Deep Abdomen, Transcranial</p>	<p><i>Single crystal phased array</i> Application : Pediatric Cardiac, Neonatal</p>



Endocavity

	
<p><i>Wide band endocavity</i> Application : OB/GYN, Urology</p>	<p><i>Wide band endocavity (curved)</i> Application : OB/GYN, Urology</p>

Others


<p><i>Linear array</i> Application : Intra-Oral, Head & Neck, MSK, Vascular</p>

Pencil type

	
<p>Application : Vascular, Cardiac</p>	<p>Application : Vascular, Cardiac</p>

Developed and Manufactured by **ALPINION**



Fast
Repair



Low
Maintenance Cost



Best
Compatibility



Extreme Clarity
Efficient Workflow
Ergonomic Design

ALPINION promises to provide these three values to customers.
We are Ultrasound Professionals



ALPINION MEDICAL SYSTEMS

ALPINION MEDICAL SYSTEMS was established in 2007 as a true value innovator in the medical imaging industry. Based on its proprietary core acoustic technologies, ALPINION sets up the value innovative diagnostic imaging portfolio (E-CUBE series), the advanced ultrasound research system, and the therapeutic ultrasound portfolio. From acoustic to therapeutic, ALPINION exerts every effort to deliver the most reliable, uniform and fundamentally excellent medical imaging performance to customers.

ALPINION's value innovative HIFU portfolio encompasses the clinical HIFU system for uterine fibroids treatment (ALPIUS 900) and pre-clinical HIFU system for animal research (VIFU 2000, WET / DRY type).

ALPINION's sole shareholder, ILJIN was established in 1967 and is a global manufacturer and supplier with a turnover of USD 2.5 billion (FY 2012) and 5,300 employees globally. ILJIN holds 14 affiliates and has business fields of display, smartphone touch screens and heavy electrical equipment, industrial diamonds, steel pipes and cables, and medical device.

GLOBAL ALPINION HEADQUARTERS

Verdi Tower, 72, Digital-ro 26-gil, Guro-gu, Seoul, 08393, Korea

Homepage www.alpinion.com

E-mail international@alpinion.com

TEL +82-2-3282-0900

FAX +82-2-851-5591

Copyright©2016 ALPINION MEDICAL SYSTEMS CO.,LTD. All rights reserved.
Catalogue contents may be changed without prior notice to customers due to performance enhancements.